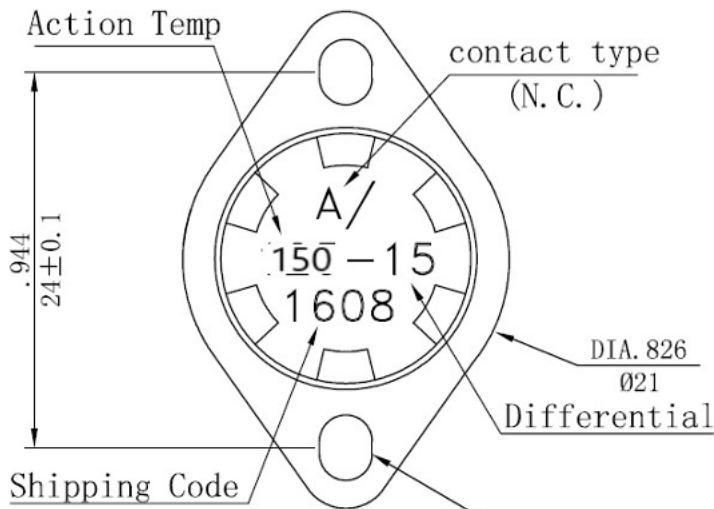


SPECIFICATIONS

- * CONTACT TYPE : Normally Closed
- * ACTION TEMP : 150;° C ± 5 °C
- * RESET TEMP : 135 °C ± 8 °C
- * TERMINAL SIZE : Amp #187 TAB
- * CIRCUIT RESISTANCE : 50mΩ MAX.
- * INSULATION RESISTANCE : 100MΩ min. at DC 500V
- * DIELECTRIC STRENGTH : AC 1000V For One Minute
Or AC 1800V For One Sec
- * ELECTRICAL RATING AND OPERATING LIFE :

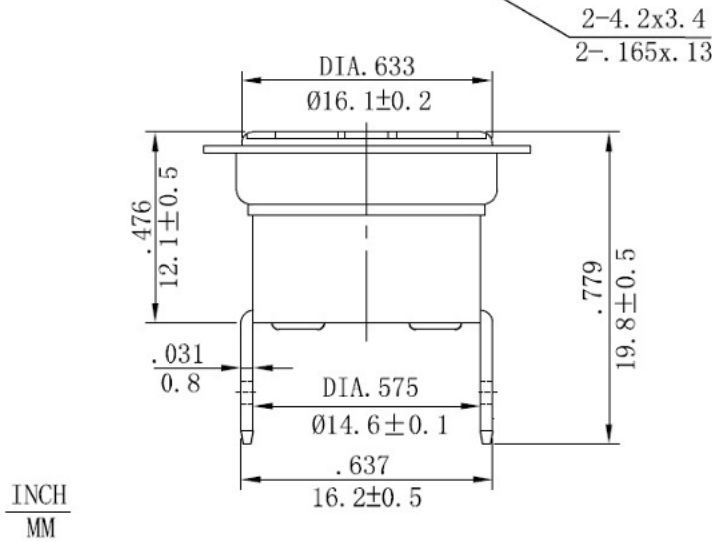
ENEC17:100,000次:15A 125VAC/10A 250VAC
 10,000次:16A 250VAC
 CQC:10,000次:16A 250VAC

	PARTS NAME	MATERIAL	UL FLAME GRADE
1	Sensing cap	Aluminum	
2	Actuating pin	Ceramic	
3	Bimetal disc	Bimetal	
4	Retainer	PPS	94V-0
5	Contact-F	Silver alloy	
6	Contact-R	Silver alloy	
7	Rivet-S	Copper	
8	Terminal	Brass tin plated	
9	Case	PPS	94V-0
10	Movable arm	Beryllium copper	
11	Stationary arm	Brass	
12	Bracket	Steel nickel plated	
13	Tube	Bronze	

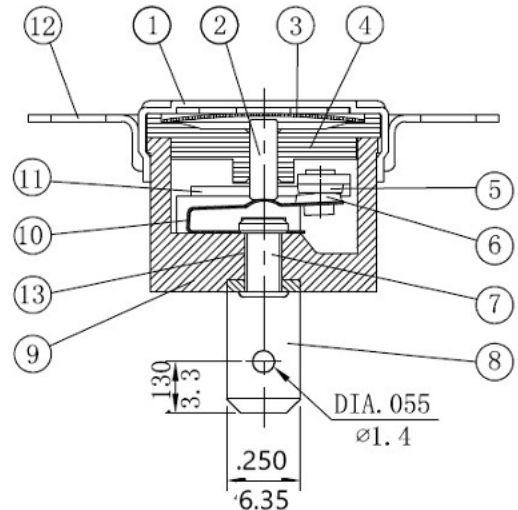


1 6 08
 08 th
 June
 2011 Year

Shipping Code



INCH
MM



The size remains unchanged, but other technical modification will be made without notice.

SCALE 2:1 (mm)

Series SWT24 Code SWT24A150BOR2-15

Unit mm Customer

draft check sale approve

Description Draft Yang